

Drain plugs for Ex e application, Polyamide

Drain Plug




- Drains condensed water in the housing.
- Helps to avoid any potential damage to sensitive electric/electronic equipment in the housing due to condensed water
- Also allows air in the housing to breathe with the surrounding atmosphere.

Technical Details

Material	Body, Cap	Polyamide 66
	Filter	Bronze
	Washer	Silicone
Ingress Protection Rating		IP 66 (for installation downward), IP64 (for installation lateral)
Temperature Range		-60°C to +85°C
Equipment For		Gas & Dust potentially explosive atmospheres
Suitable for use in	Group II	Gas Group IIC
	Group III	Dust Group IIIC
Equipment Marking		Ex II 2GD Ex eb IIC Gb Ex tb IIIC Db
Marking Example		BMD BMDRP...CE 0722 Ex II 2GD Ex eb IIC Gb Ex tb IIIC Db IP66 Ta -60C to +85C IMQ ATEX 030X IECEx IMQ 14.0003X
Type Protection		Ex eb; Ex tb
Thread Type		• Metric (M)
Accessories		• Drain Lock-Nuts

Remarks

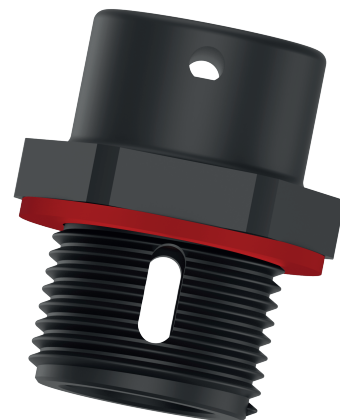
- All accessories must be ordered separately.

Approvals	Certificate Number	Standards
	IMQ 13 ATEX 030X	EN 60079-0, 7, 31
	IECEx IMQ 14.0003X	IEC 60079-0, 7, 31
	E350312	UL 508A
TYPE 4X	E350312	UL 50E

• For details of approvals, see our website

* To guarantee IP66 protection, drain plugs should be assembled downward of the enclosure.
For lateral installation, drain plugs provide IP64 protection.

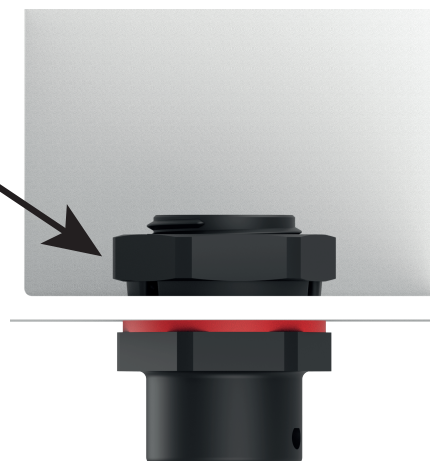
SPICA



Threaded Hole



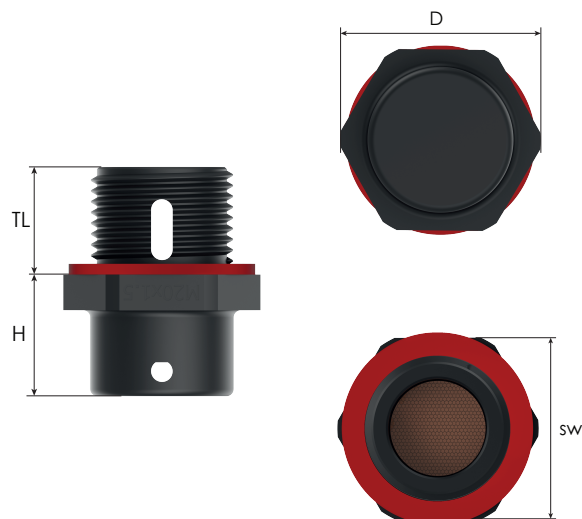
Non-Threaded Hole



Special Lock Nut
for Drain Plug

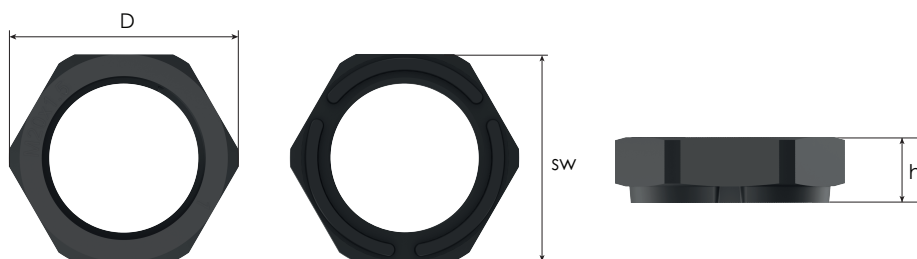
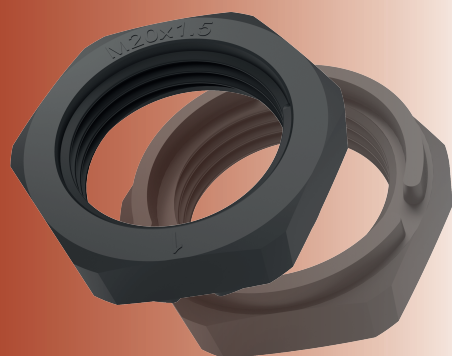
Order Coding	
Part Number	- Lock Nut
Mandatory	- Option
See table	- L Lock nut
Example	
BMDRP-X2S-L	-

SPICA Drain plugs for Ex e application



Thread Type **METRIC** acc. to ISO 965-3

Thread Size	TL	SW	Outer Ø 'D'	Height 'H'	Product Code
M20x1,5	15,0	25	27,5	17,0	BMDRP-X2S
M25x1,5	15,0	29	31,5	17,0	BMDRP-X3S



Special Lock Nut for Drain Plugs

Thread Type **METRIC** acc. to ISO 965-3

Thread Size	SW	Outer Ø 'D'	Height 'H'	Product Code
M20x1,5	26	28,6	8	BMDL-22
M25x1,5	32	35,0	8	BMDL-23